

**Yes, please enroll me as a member of  
*Friends of the Creche***

Name \_\_\_\_\_

Address: \_\_\_\_\_

City: \_\_\_\_\_

State/Province: \_\_\_\_\_

Zip/Postal Code: \_\_\_\_\_

Phone: \_\_\_\_\_

Email: \_\_\_\_\_

How did you hear about *Friends of the  
Creche*?

\_\_\_\_\_

\_\_\_\_\_

Membership year runs from January through December. Membership dues are \$35.00 (US) for postal addresses in the U.S.A. and \$40.00 (US) for postal addresses outside the U.S.A.

Make checks payable to *Friends of the Creche*, and mail to Friends of the Creche, Neil Allen, 20359 SW Lela Ln, Beaverton, Oregon 97003

Rates listed are valid through December 31, 2025.

Any questions or to **pay by credit card** visit [www.friendsofthecreche.org](http://www.friendsofthecreche.org) and click "Join Us!".

## **Friends of the Creche:**

- Publishes a quarterly magazine, the *Creche Herald*
- Has annual meetings and a biennial conference in unique places throughout the country
- Gives you a chance to meet other people who share your nativity interests
- Publishes a blog, has its own Facebook Page, and a Facebook Group where you can add content.
- Offers online gatherings.
- Provides a "Members Only" digital *Creche Herald* archive and collection of incredible displays and collections

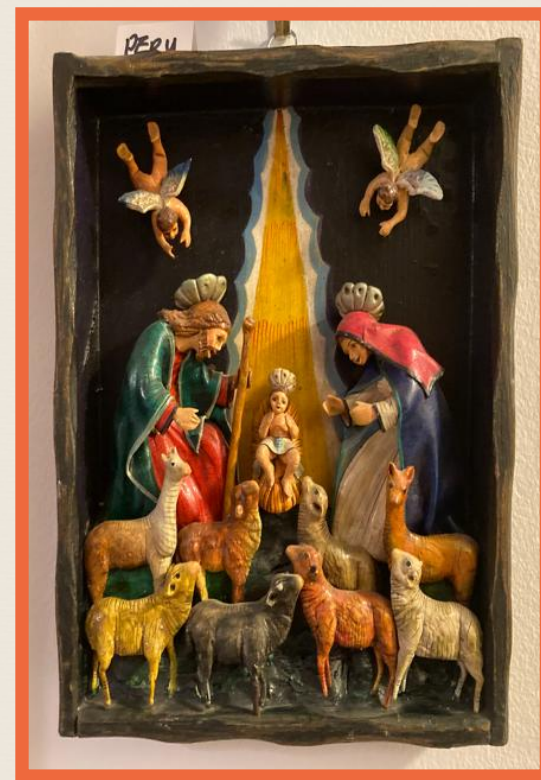
*Enjoy all these benefits  
as a member of*

**Friends of the Creche**



*IF YOU ARE  
INTERESTED IN  
NATIVITIES  
(a.k.a. CRECHES)*

**JOIN US!**



We are  
**Friends of  
the Creche**

## *Friends of the Creche and the Creche Tradition*

*Friends of the Creche* is a national group - linked to similar international groups - that treasures the creche and creche traditions.

Meet fellow collectors, learn about different nativity traditions, and share your interests.

*Friends of the Creche* is a nonsectarian, nonprofit organization for all those who collect, exhibit, study, create, or simply treasure Christmas Nativity scenes.

For further information visit our website: [www.friendsofthecreche.org](http://www.friendsofthecreche.org)

### *Find us on FaceBook*

Join us today - one membership fee covers two family members at the same address.



## *Biennial Conference*

*Dec. 1 - 3, 2025 — Cleveland, OH*

- ❖ Cleveland welcomes you to the **Great Lakes Nativity**, located in the Cleveland Marriott East in Warrensville Heights, OH. Rooms are available at a conference discount. All tour locations are included in the conference fee.
- ❖ It is a short 20-minute drive to the first temple of the Church of Jesus Christ of Latter-day Saints in Kirtland, Ohio. We will tour the historic church, original settlement and visitor center, which is filled with members' nativities. They also have the Lord's Prayer recorded in every language.
- ❖ The tour continues with the Sanctuary on Green, a converted home filled with wonderful hand-carved nativities and other Christmas ornaments. The sculptor lives on site.
- ❖ Then we will tour Gesu church to see Emma Lincoln's personal nativity collection on permanent display.
- ❖ Amazing presentations are scheduled, with speakers from Cleveland Museum of Art, Nativity of the Lord Jesus Catholic, and University of Dayton.

Please join us on the North Coast for a delightful time!



"The Nativity" by Gerard David, 1450-1523, Netherlands. Available for viewing at the Cleveland Museum of Art

The conference program and registration details will be listed in the *Creche Herald* magazine and on the *Friends of the Creche* website:  
[www.friendsofthecreche.org](http://www.friendsofthecreche.org)